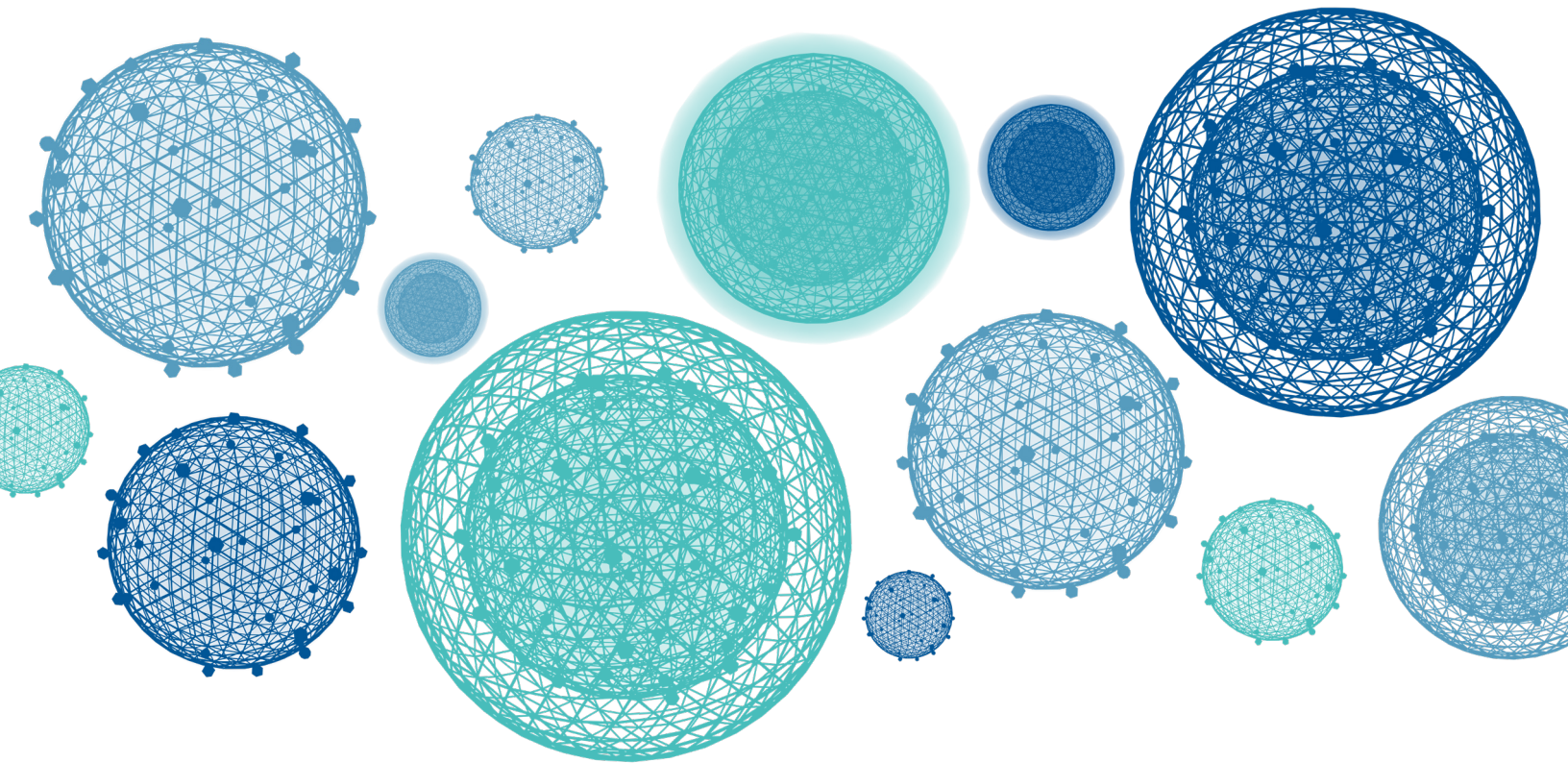




Nanotrap[®] Technologies: Capturing the Invisible for Real Insights

Transform your workflows — enrich low-abundance targets and leave impurities behind.

Ceres Nanosciences Product Portfolio



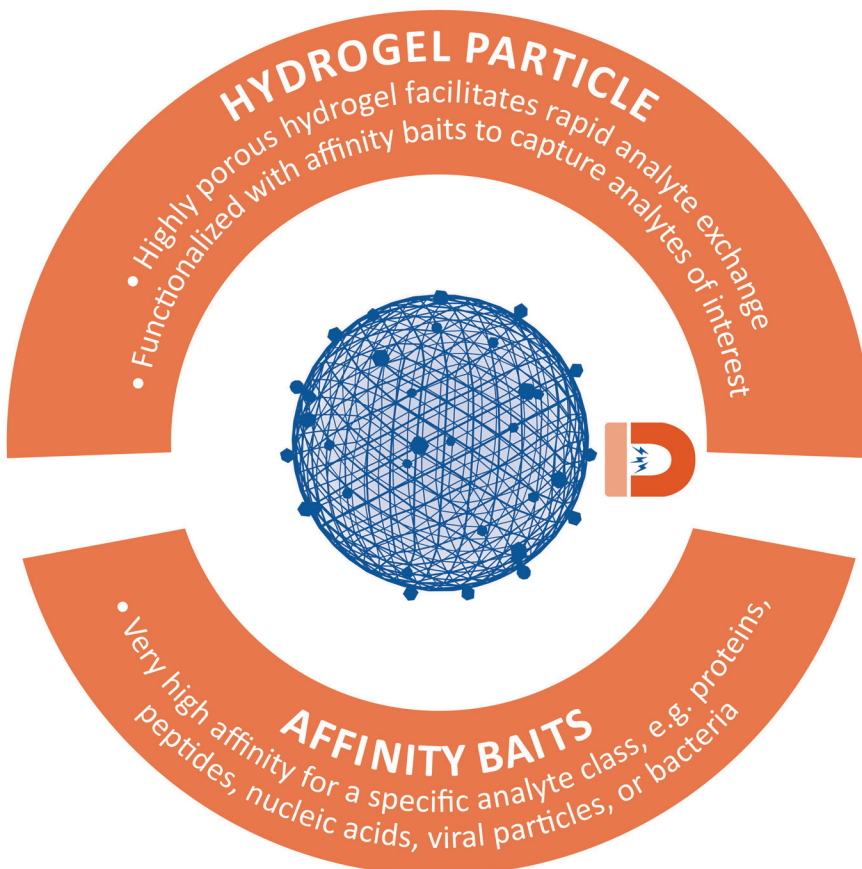
Partner with Ceres to Elevate Your Discoveries

Whether you're building next-gen diagnostics, scaling surveillance, or running proteomics campaigns — Ceres is ready to help. Partner with us to accelerate your success.

Nanotrap® Particle Technology

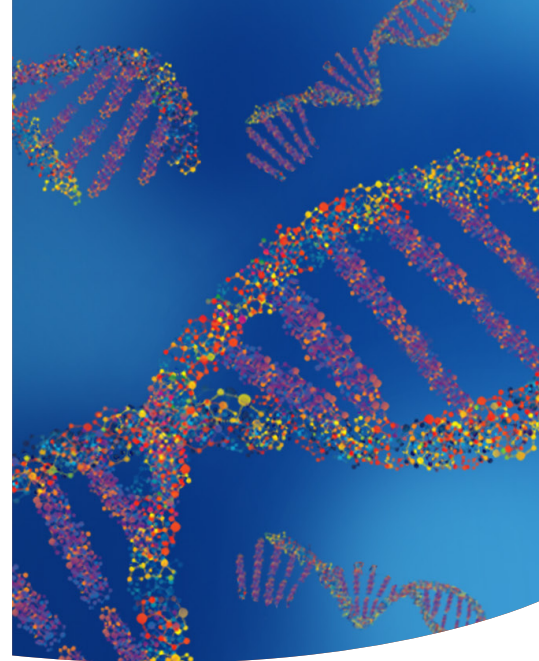
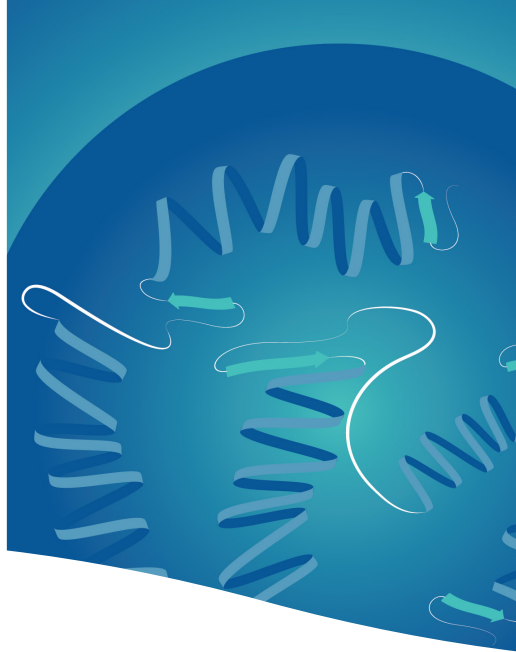
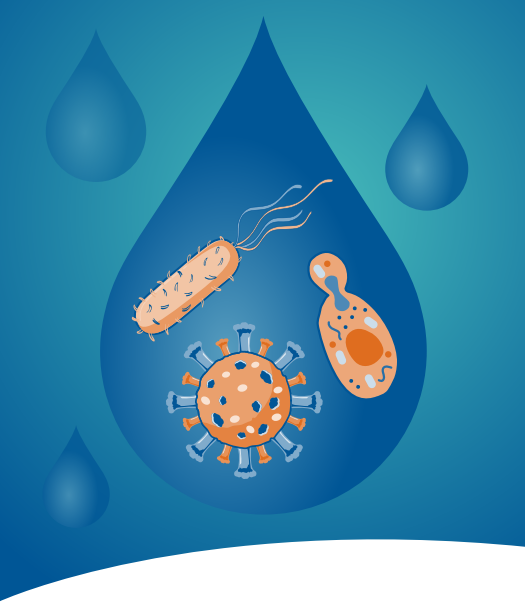
Our proprietary Nanotrap® hydrogel particles capture, concentrate, and preserve analytes from complex biological samples.

Nanotrap® Particles capture and concentrate viruses, bacteria, microbes, cfDNA, nucleic acids, proteins, peptides, extracellular vesicles, protozoa, fungi, and many other analytes of interest, and the particle library continues to grow to meet evolving customer needs.



Key Features:

- Hydrogel plus affinity baits bind proteins, peptides, nucleic acids, microbes, and extracellular vesicles.
- Rapid kinetics and cleanup, removing interfering molecules via magnetic technology.
- Automation-friendly, scalable to high throughput.
- Long shelf life, room temperature stable.



Applications Where Nanotrap Technologies Drive Impact

Real World Uses



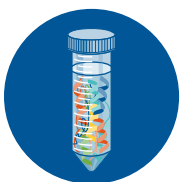
Water Biosecurity and Surveillance

Nanotrap® Microbiome Particles concentrate pathogens & microbes from wastewater and sludge.



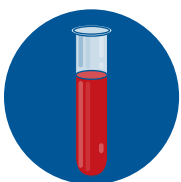
Environmental Water

Nanotrap Microbiome Particles concentrate viruses, bacteria, fungi, and pathogens from tap water.



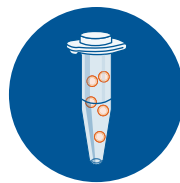
Proteomics

Nanotrap® Protein Enrichment Affinity Kits enrich low-abundance proteins & peptides.



Liquid Biopsy

Nanotrap® NEAT Liquid Biopsy Kits capture and concentrate cell-free DNA from plasma samples while simultaneously reducing genomic DNA contamination.



Extracellular Vesicles

Nanotrap® Extracellular Vesicle Particles capture, irreversibly bind, and concentrate extracellular vesicles for downstream analyses that require highly enriched extracellular vesicle samples or small volumes.



Food Wash

Nanotrap Microbiome Particles capture and concentrate viruses, bacteria, fungi, and parasites from food wash samples, including produce, shellfish, and milk.



Clinical Research

Using Nanotrap® Technology for a multi-omics approach with swabs, whole blood spot, urine, VTM, UTM, CSF, synovial fluid, plus others.



Learn more:

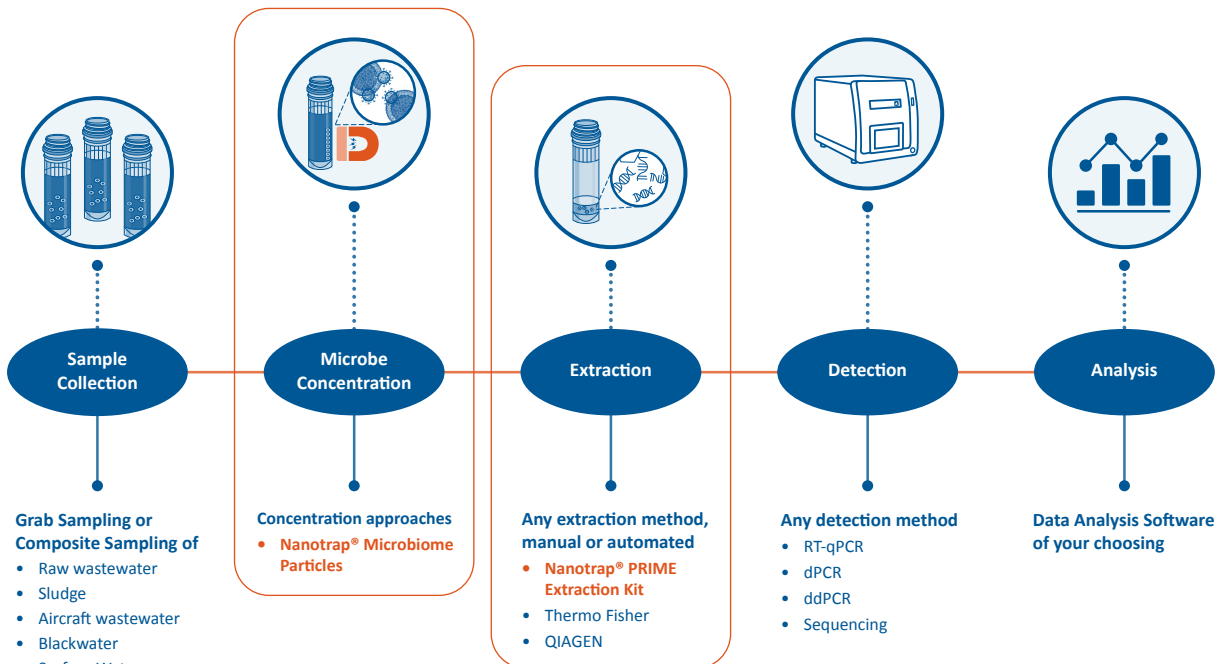
<https://www.ceresnano.com/applications>

Infectious Disease

Improve Your Capture Efficiency with 2-10x Higher Recovery

Nanotrap® Microbiome Products

Capture and concentrate low-abundance microbes from multiple sample types, including whole blood, NP swabs, saliva, urine, plasma, serum, food wash, wastewater, blackwater, sludge, airplane lavatory fluid, and surface waters.



Product	SKU
Nanotrap® Microbiome A Particles	44202
Microbiome® Microbiome B Particles	65202
Nanotrap® Enhancement Reagent 1	10111
Nanotrap® Enhancement Reagent 2	10112
Nanotrap® Enhancement Reagent 3	10113
Nanotrap® Buffer 2	10102
Nanotrap® Buffer 3	10103
Nanotrap® PRIME Extraction Kit	11001



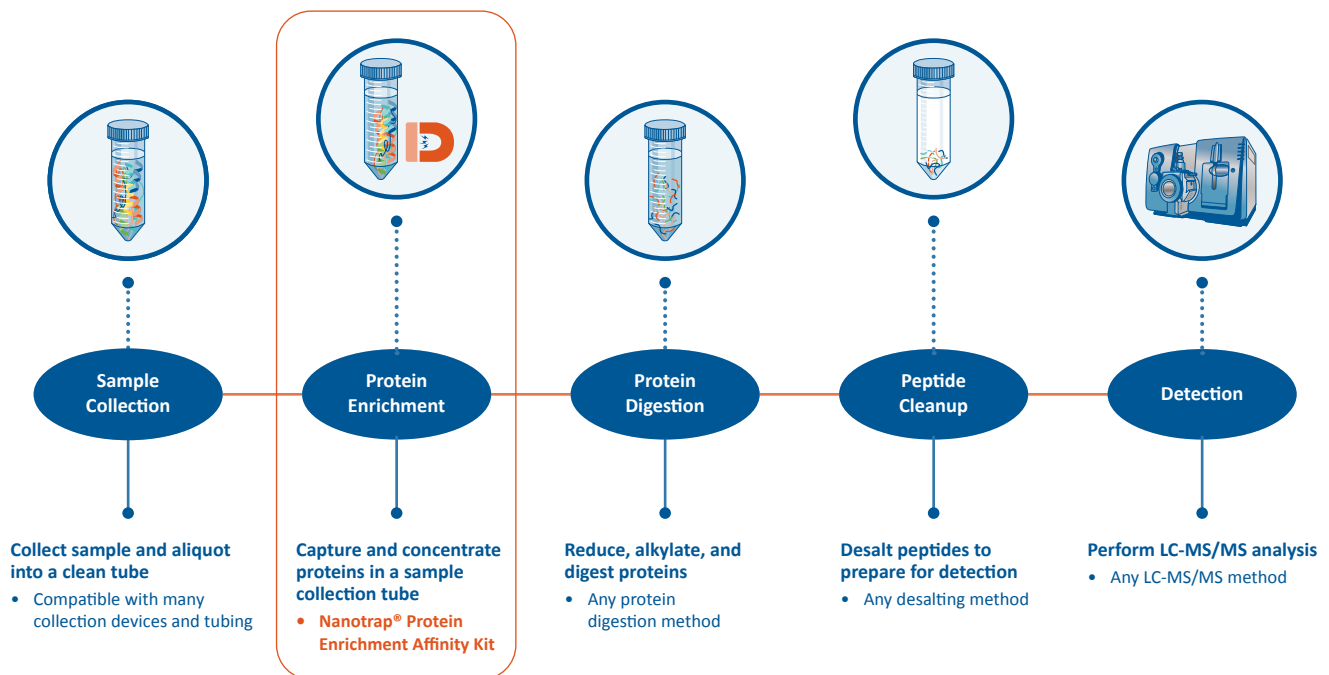
Learn more:
<https://www.ceresnano.com/microbiome>

Proteomics

Uncover Low-abundance Biomarkers

Nanotrap® PEAK Kit

Enrich low abundance, low molecular weight proteins and peptides from plasma, serum, urine, CSF, synovial fluids, saliva, and whole blood spot, with unprecedented, precise quantitative results.



Product	SKU	Number of Samples
Nanotrap® Protein Enrichment Affinity Kit - Discovery	34200	24 plasma samples, 48 cerebrospinal fluid samples, or 24 urine samples
Nanotrap® Protein Enrichment Affinity Kit - A	34210	50 plasma samples, 100 cerebrospinal fluid samples, or 50 urine
Nanotrap® Protein Enrichment Affinity Kit - B	34220	50 plasma samples, 100 cerebrospinal fluid samples, or 50 urine
Nanotrap® Protein Enrichment Affinity Kit - C	34230	50 plasma samples, 100 cerebrospinal fluid samples, or 50 urine
Nanotrap® Buffer 4	10104-13	Dependent on sample type



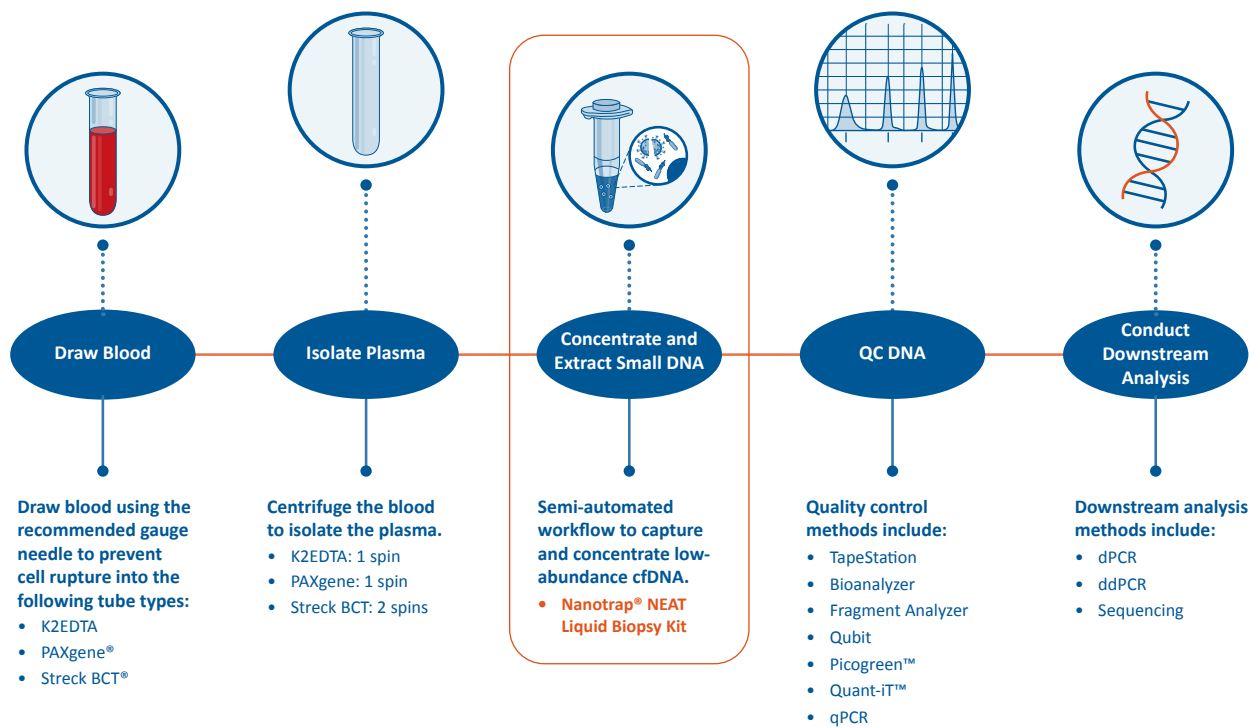
Learn more:
<https://www.ceresnano.com/nanotrap-peak>

Liquid Biopsy

Purer, More Concentrated cfDNA with Less gDNA Contamination

Nanotrap NEAT Liquid Biopsy Kit

The Nanotrap® NEAT Liquid Biopsy Kit captures and concentrates cell-free DNA (cfDNA) from plasma samples while simultaneously reducing genomic DNA contamination. The result is a purer and more concentrated cfDNA product, 50–800 base pair fragments, that can be used in qPCR, dPCR, ddPCR, and sequencing assays.



Product	SKU	Number of samples
Nanotrap® NEAT Liquid Biopsy Kit	77300	100 1 mL samples
Nanotrap® NEAT Liquid Biopsy Kit - Streck BCT	77301	100 1 mL samples



Learn more:

<https://www.ceresnano.com/blank/neat-liquid-biopsy-kit>

Extracellular Vesicles

Enrich Extracellular Vesicles to Small Volumes

Nanotrap® Extracellular Vesicle Particles

Capture, irreversibly bind, and concentrate extracellular vesicles before conducting downstream analyses that require highly enriched extracellular vesicle samples or small volumes.



Product	SKU
Nanotrap® Extracellular Vesicle A Particles	55200-5
Nanotrap® Extracellular Vesicle B Particles	55202-5



Learn more:
<https://www.ceresnano.com/ev>

DNA/RNA Extraction

Extract More of What You're Looking For

Nanotrap® PRIME Extraction Kit

Seamlessly integrated into the Ceres capture and concentration workflow, the Nanotrap PRIME Extraction Kit efficiently extracts nucleic acids from concentrated environmental and urine samples.



Product	SKU
Nanotrap® PRIME Extraction Kit	11001



Learn more:
<https://www.ceresnano.com/prime-extraction-kit>

About Ceres Nanosciences

Ceres Nanosciences is a privately owned, global biotech company based in Northern Virginia. We've been developing sample-preparation solutions using our proprietary Nanotrap® Particle technology since 2011.

ISO 9001: 2015 Certified



Global Ceres Placements

CeresNOW Support We're here to help.

Take advantage of our expert technical CeresNOW support. Get answers when you need them with lightning-fast response times.

- Laboratory design
- Product selection
- Workflow development
- Method implementation training
- Method development
- Workflow optimization



Contact Us

support@ceresnano.com | www.ceresnano.com | **800-615-0418**